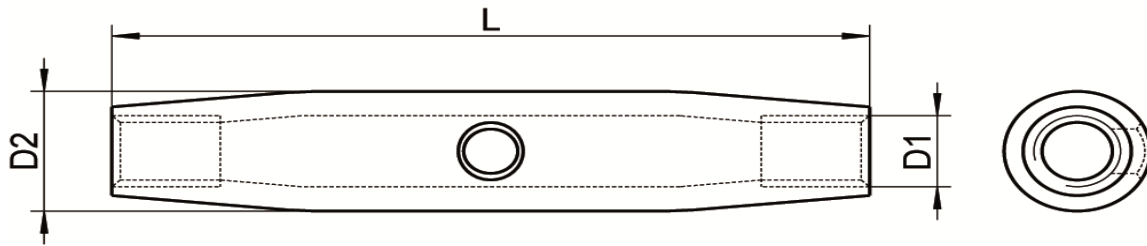




ART. 8457

Mini canaule chiuse per tenditori aisi 316 / A4

Small turnbuckle closed body aisi 316 / A4



Codice Articolo Item Number	D1 (mm)	L (mm)	D2 (mm)	 Box	 Master carton
84570600004	M 6	65	10	10	400
84570800004	M 8	70	13	10	300
84571000004	M10	85	17	5	150

Attenzione!!! Le caratteristiche tecniche sopra riportate, sono puramente indicative e possono subire variazioni da lotto a lotto, a seconda della produzione.

Pay attention!! The dimensions shown in the data sheets are subject to minimal variations (different production line batch).



last edit 10/10/2019

DRAWING N. 1120